



# SOUTH AFRICA COUNTRY REPORT

## – SA HEALTHCARE LANDSCAPE 2011 –



**COMPILED: APRIL 2011**

# REPORT OVERVIEW

**Compiled: April 2011  
(112 pages)**

This comprehensive report examines the South African Healthcare Landscape: SA Geo-Demographics, Burden of Disease, Department of Health, Health Policy, Medical Services Update, Public Sector, Private Sector, Medical Aids, Pharmaceutical Services Sector, Pharmaceutical historical market sales (past 5 years) and sales forecasts until 2014

**Some of the key questions the report will help you to answer are:**

- What is the South African populations geo-demographic profile?
- Which are the key diseases affecting South Africans?
- How is the Department of Health structured and what will be their main areas of focus till 2014?
- What is being proposed for the National Health Insurance implementation?
- What is the distribution of Healthcare facilities and Medical services in the Public Sector?
- What is the distribution of Medical Services and Private Hospitals in the Private Sector?
- What are the trends in the Medical Aid sector in the last 10 years?
- Who are the key players in the Pharmaceutical Services sector?
- What has been the pharmaceutical sales trends in South Africa?

# REPORT OVERVIEW

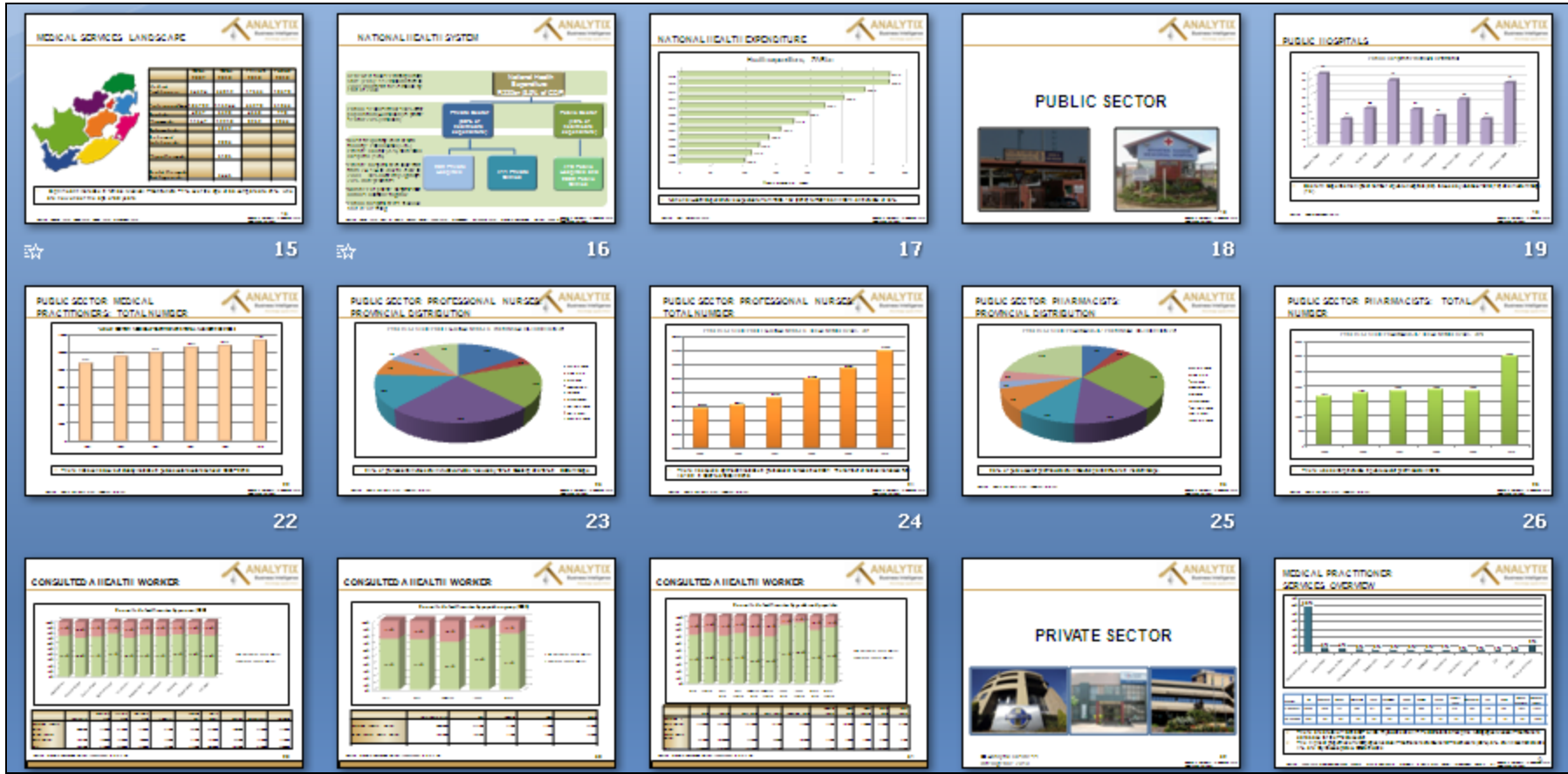
It provides a comprehensive understanding of the South African Health system and the key healthcare sectors.

It examines in detail the distribution of various services in the public and private sector, trends in the medical aid sector, geo-demographic profile of the South African population, burden of diseases that affect South Africans, making it a vital reference report for anyone wanting to understand Healthcare in South African.

## Why purchase this market research reports?

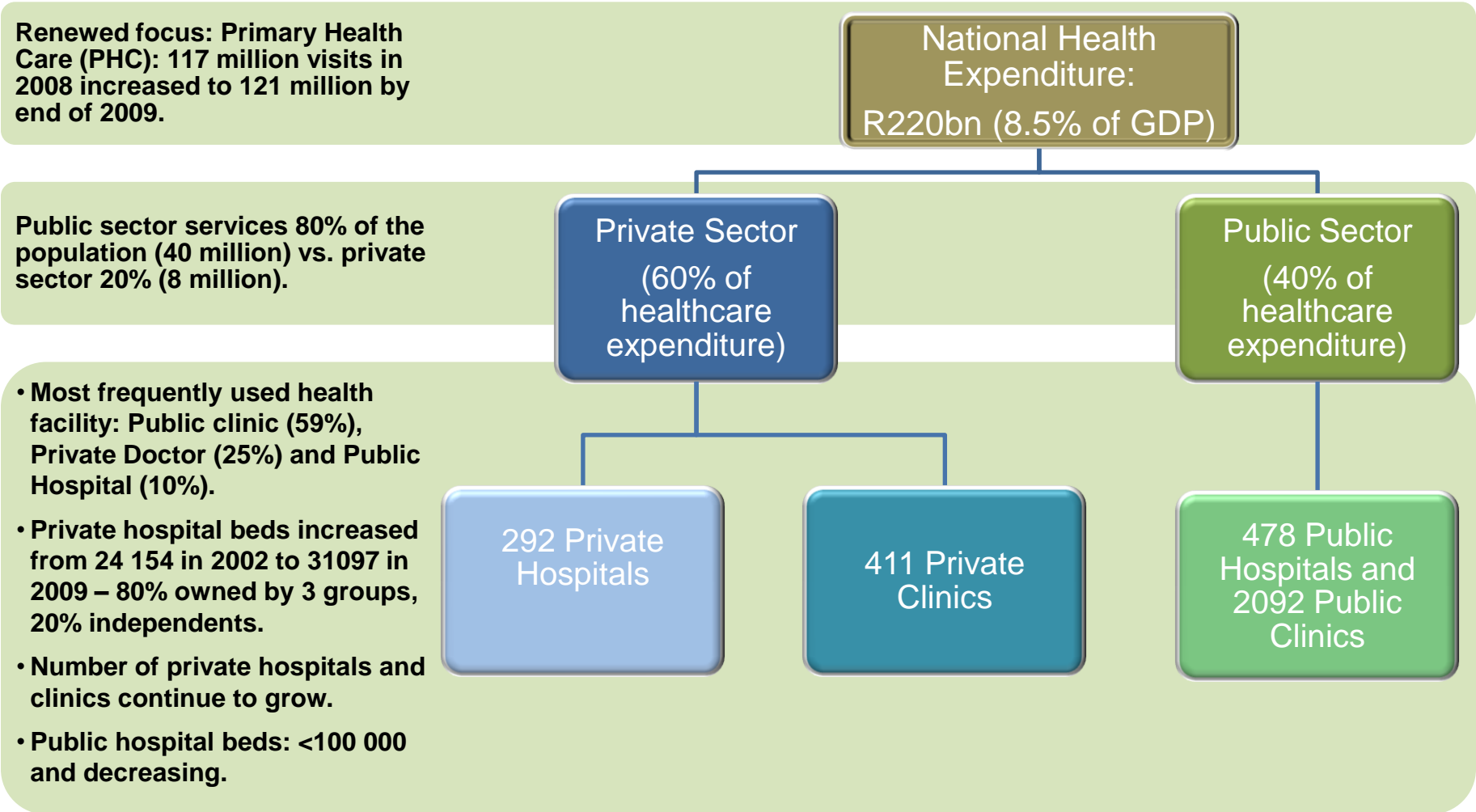
- Provides a comprehensive analysis of the “big picture” of Healthcare in the country.
- Overview of National Health system (Public Sector, Private Sector, Medical Aids, Pharmaceutical Services)
- Focuses on South Africa’s burden of diseases
- Pharmaceutical historical sales (past 5 years) and sales forecasts until 2014
- Includes the recent WHO South African Health Indicators
- 112 page report with 100+ charts, graphs, tables
- Salient points and key insights are highlighted and summarised in comment boxes on each page

# SCREENSHOTS FROM REPORT



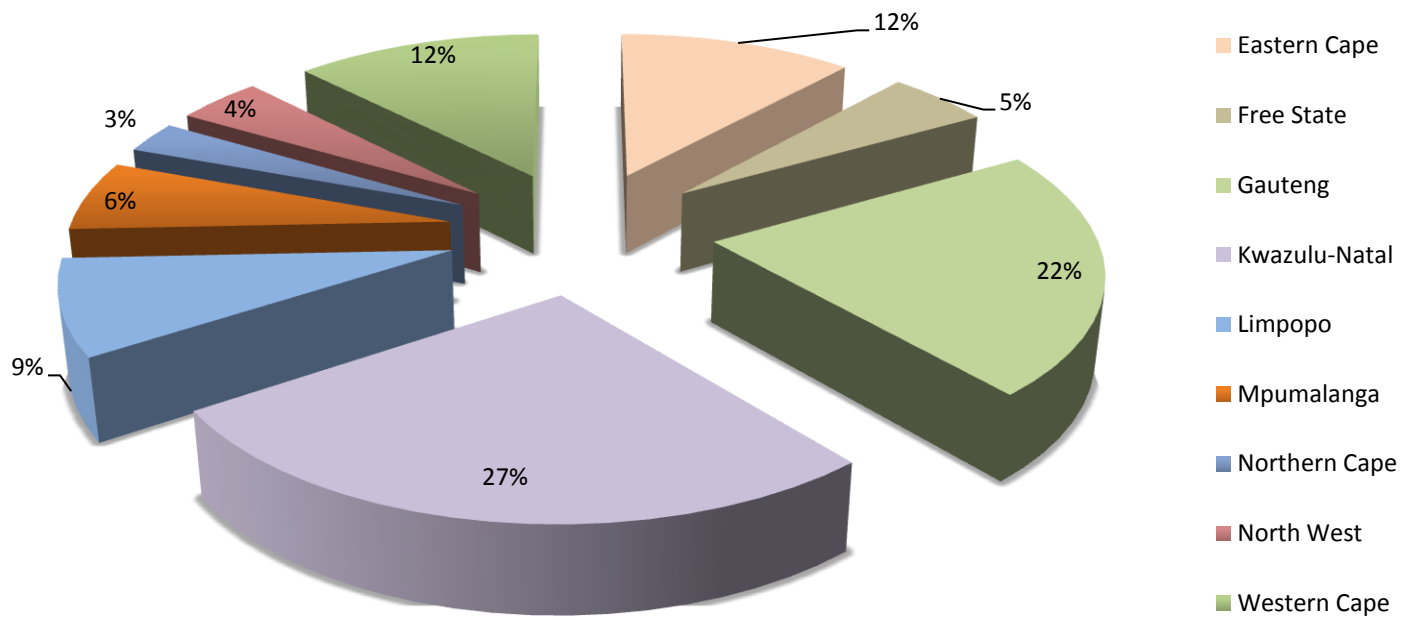
**112 page report with 100+ charts, graphs, tables and insights**

# NATIONAL HEALTH SYSTEM



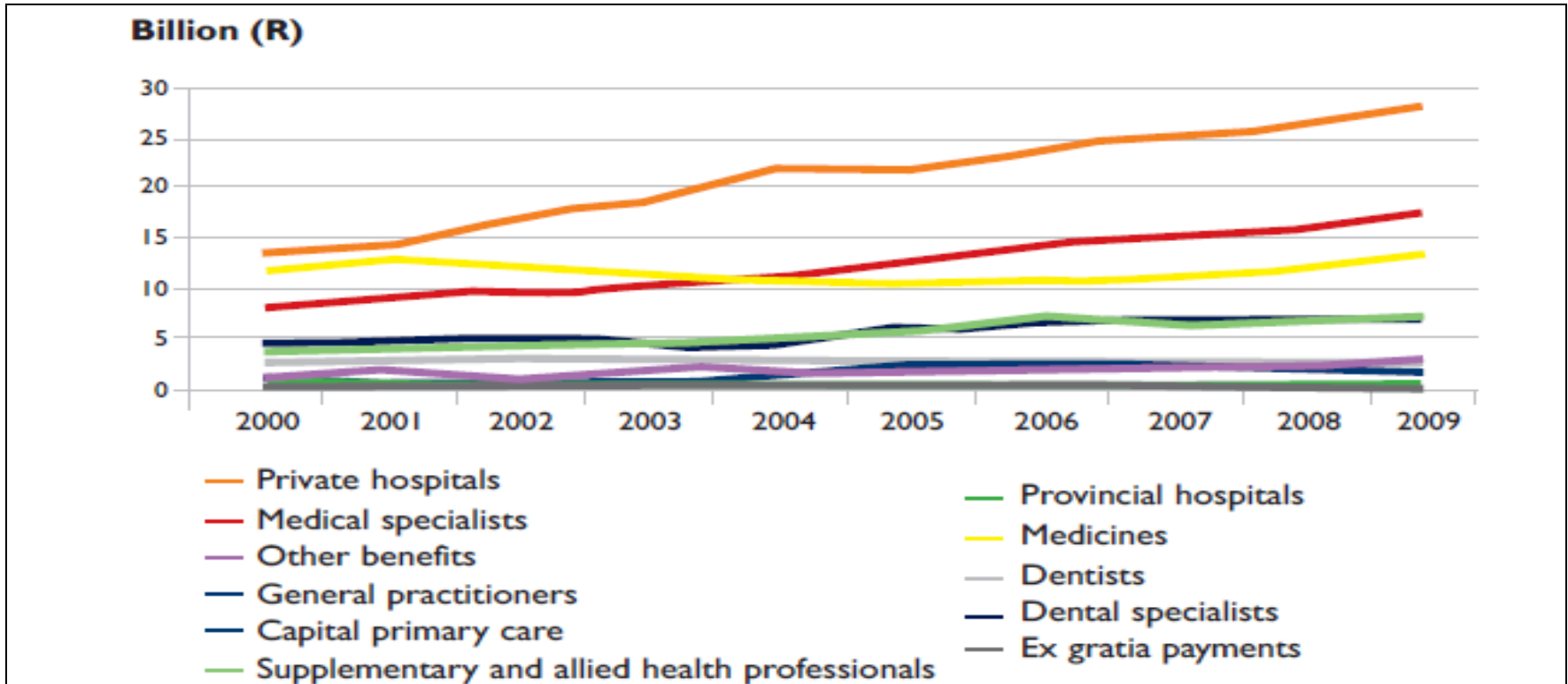
# PUBLIC SECTOR MEDICAL PRACTITIONERS: PROVINCIAL DISTRIBUTION

**PUBLIC SECTOR MEDICAL PRACTITIONERS: PROVINCIAL DISTRIBUTION 2010**



● The highest percentage of public sector medical practitioners are in Kwazulu-Natal (27%), followed by Gauteng (22%), Western Cape (12%) and Eastern Cape (12%).

# MEDICAL AID: BENEFITS PAID



- The most significant increase has been in expenditure on private hospitals, which has increased from R13.4 billion in 2000 to R28 billion in 2009. This accounted for 36.7% of all benefits paid in 2009.
- The second highest increase has been in benefits paid to medical specialists which amounted to R16.7 million, reflecting an increase of 90% from 2000.

# FOCUS ON CANCER

## Males

- Incidence of cancer 148.9/100000
- Highest incidence among white males, 3x higher than black males
- Most frequent cancers: Prostate, lung and oesophageal cancers
- Screening tests: PSA levels (Prostate cancer)

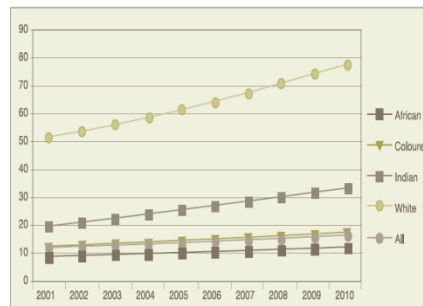
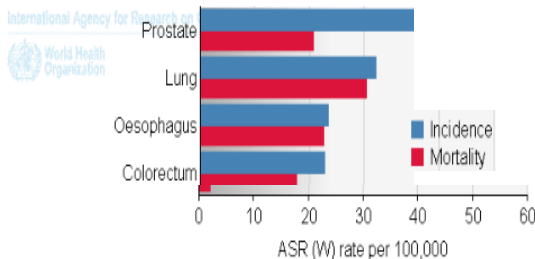
## Ageing

- Population ageing a major global demographic trend
- An aging population will experience a higher incidence of cancer and chronic diseases.
- South Africa's aging index has increased from 11 in 2001 to 16 in 2010.

## Females

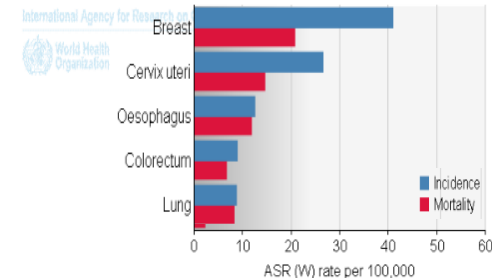
- Incidence of cancer 134.9/100000
- Highest incidence among white females, 2x higher than black females
- Most frequent cancers: Breast, cervical and oesophageal cancers
- Screening tests: Mammogram (Breast cancer), Pap smear (Cervical cancer)

Most frequent cancers: men



Source: Calculated from StatsSA Mid-year Estimates.

Most frequent cancers: women



# TABLE OF CONTENTS

1. **South African Population Demographics**
  - 1.1. **Provincial overview**
  - 1.2. **South African population: Age 1996, 2001, 2007**
  - 1.3. **South African population Groups: 1996, 2001, 2007**
  - 1.4. **South African population: Home language 1996, 2001**
  
2. **South Africa's Burden of Disease**
  - 2.1. **Burden of disease: South Africa and global**
  - 2.2. **South Africa Health Indicators**
  - 2.3. **South Africa Health Indicators: HIV and Tuberculosis**
  - 2.4. **South Africa Health Indicators: Risk factors**
  - 2.5. **Focus on HIV**
  - 2.6. **Focus on Tuberculosis**
  - 2.7. **Chronic diseases 1**
  - 2.8. **Chronic diseases 2**
  - 2.9. **Chronic condition combinations on medical schemes**
  - 2.10. **Chronic condition combinations on medical schemes: Age and Gender**
  - 2.11. **Global prevalence of diabetes**
  - 2.12. **Diabetes prevalence in African and South Africa**
  - 2.13. **Focus on Cancer**
  - 2.14. **Cancer among South African men**
  - 2.15. **Cancer among South African women**

# TABLE OF CONTENTS

## 3. Department of Health and Healthcare Policy

- 3.1. Department of Health
- 3.2. Department of Health: Divisions
- 3.3. Department of Health: Functions of MINMEC
- 3.4. Health Policy Overview
- 3.5. Health Policy Highlights 2009/2010
- 3.6. Health Sector Achievements Last 15 years
- 3.7. National Health Insurance Overview
- 3.8. National Health Insurance 1
- 3.9. National Health Insurance 2
- 3.10. National Health Insurance 3
- 3.11. NHI: ANC Financial Proposal

## 4. Healthcare Services Update

- 4.1. **Medical Services Update:** Medical Practitioners, Professional Nurses, Dentists, Pharmacists, Optometrists, Dieticians, Physiotherapists, Oral Hygienists (2010)
- 4.2. **National Health System Overview:** Public Hospital: Private Hospital: Public Clinic: Private Clinic
- 4.3. **National Health Expenditure:** 2003-2014
- 4.4. **Hospitals and Clinics by Province**

# TABLE OF CONTENTS

- 5**            **Public Sector**
  - 5.1.**            **Public Hospitals by Provincial Distribution**
  - 5.2.**            **Public Clinics by Provincial Distribution**
  - 5.3.**            **Public Sector Medical Practitioner: Provincial Distribution 2010**
  - 5.4.**            **Public Sector Medical Practitioner: Total Number 2005-2010**
  - 5.5.**            **Public Sector Professional Nurses: Provincial Distribution 2010**
  - 5.6.**            **Public Sector Professional Nurses: Total Number 2005-2010**
  - 5.7.**            **Public Sector Pharmacists: Provincial Distribution 2010**
  - 5.8.**            **Public Sector Pharmacists: Total Number 2005-2010**
  - 5.9**            **Public Sector Dental Practitioner: Provincial Distribution 2010**
  - 5.10.**            **Public Sector Dental Practitioner: Total Number 2005-2010**
  
- 6.**            **Private Sector**
  - 6.1.**            **Private Hospitals Provincial Distribution**
  - 6.2.**            **Private Hospitals: Number of Beds 2007-2009**
  - 6.3.**            **Private Hospitals: Total Number of Beds 2007-2009**
  - 6.4.**            **Private Clinics Provincial Distribution**
  - 6.5.**            **Private Hospital Groups: Regional**
  - 6.6.**            **Medical Practitioner Services Overview**
  - 6.7.**            **Specialists vs. Private Hospitals: Regional**
  - 6.8.**            **Private Hospitals: GDP: Medical Aid: Population (Regional overview)**

# TABLE OF CONTENTS

- 7. Medical Aids**
  - 7.1. Medical Aid Landscape**
  - 7.2. Population covered by Medical Aid: 2002-2009**
  - 7.3. Medical Aid coverage by population groups: 2009**
  - 7.4. Medical Aid coverage by province: 2009**
  - 7.5. Medical Aid coverage by age groups: 2009**
  - 7.6. Medical Aid Administrators: Market share 2009**
  - 7.7. Medical Aid Administrators: Market share 2001-2009 (Discovery Health, Metropolitan Health Corporate, Medscheme Holdings, Momentum Medical Scheme, V Med Administrators)**
  - 7.8. Medical Aid: Number of schemes 2000-2009 (Open vs. Restricted)**
  - 7.9. Medical Aid: Schemes by size 2001-2009 (Large/Medium/Small schemes)**
  - 7.10. Medical Aid: Number of benefit options 2002-2009 (Open vs. Restricted)**
  - 7.11. Medical Aid: Number of beneficiaries 2000-2009 (Open vs. Restricted)**
  - 7.12. Medical Aid: Average age of beneficiaries 2001-2009 (Open vs. Restricted)**
  - 7.13. Medical Aid: Pensioner ratio 2008-2009 (Gender, Open vs. Restricted)**
  - 7.14. Medical Aid: Provincial distribution of beneficiaries 2008-2009**
  - 7.15. Medical Aid: Benefits paid 2000-2009**
  - 7.16. Medical Aid: Burden of disease**
  - 7.17. Discovery company profile**
  - 7.18. Medscheme Holdings company profile**
  - 7.19. Qualsa company profile**
  - 7.20. GEMS company profile**
  - 7.21. Momentum Medical Scheme company profile**

# TABLE OF CONTENTS

- 8. Pharmaceutical Services Sector**
  - 8.1. Pharmaceutical Services: Regional**
  - 8.2. Pharmacy distribution by province**
  - 8.3. Retail Pharmacies: Sub-region**
  - 8.4. Pharmaceutical distributors & wholesalers used by retail pharmacies: Regional penetration**
  - 8.5. Regional distribution: Top 5 Pharmacy groups**
  - 8.6. Clicks Group Limited organogram**
  - 8.7. Clicks group company profile**
  - 8.8. Dis-chem pharmacy company profile**
  - 8.9. Retail pharmacies overview**
  - 8.10. Supermarkets with pharmacies overview**
  - 8.11. SWOT of pharmaceutical market**

# TABLE OF CONTENTS

- 9. Pharmaceutical Sales**
  - 9.1. Pharmaceutical sales trends: 2002-2014**
  - 9.2. Prescription vs. OTC sales trends: 2003-2014**
  - 9.3. Prescription drug sales trend by category: 2003-2014**
  - 9.4. Patented vs. generic drug sales trends: 2003-2014**
  - 9.5. Patented vs. generic drug sales trends (% of total sales): 2003-2014**
  - 9.6. OTC medicine sales trends: 2003-2014**
  - 9.7. OTC medicine sales trends (% of total medicine sales): 2003-2014**
  - 9.8. OTC medicine sales trends by category: 2003-2014**
  - 9.9. OTC medicine sales: Vitamin and mineral sales 2003-2014**
  - 9.10. OTC medicine sales: Skin treatment sales 2003-2014**
  - 9.11. OTC medicine sales: Digestive drug sales 2003-2014**
  - 9.12. OTC medicine sales: Analgesic sales 2003-2014**

# ANALYTIX HEALTHCARE EXPERTISE



- We have a **cross-functional team of senior-level experts** (medical practitioner, pharmaceutical, marketing and market research) that ensures in-depth consumer understanding and relevant industry insights are delivered
- For all projects, the **senior exec team are involved hands-on** from project and questionnaire design through to analysis and presentation
- Our smaller team allows us to provide significantly **more affordable solutions and rapid turnaround times** compared to our larger competitors
- We provide innovative, **customised market research solutions** based on consumer-centric healthcare information and knowledge
- We have **partnered with other healthcare service providers** e.g. MEDpages to provide accurate and up-to-date industry information
- Companies benefit from our **level 3 B-BBEE certification** which allows for procurement recognition of 110%



# ORDERING FORM

## ORDERING INSTRUCTIONS

(1.) Complete the order form & fax back to 086 671-2165 or email to info@analytixbi.com (2.) An invoice will be generated and e-mailed (3.) The report will be emailed in PDF format upon receipt of payment or when proof of payment has been provided (4.) All prices exclude 14 % VAT

## COMPANY DETAILS

Company Name:			
Postal Address:			
Town/City:		Postal Code:	
Tel Number:		Fax Number:	
Your email address:		Billing email:	
Your name:		VAT number:	

## CONFIRMATION: I/we wish to order this publication (please tick)

Title of Publication	Total Ex Vat	<input type="checkbox"/>
South Africa Country Report: SA Healthcare Landscape 2011	R9,000	<input type="checkbox"/>

## ACKNOWLEDGEMENT

I am authorised to order this publication on behalf of the company and agree to the payment terms.

\_\_\_\_\_  
Client (Print Name)

\_\_\_\_\_  
Signature

\_\_\_\_\_  
Capacity

\_\_\_\_\_  
Date

# CONTACT DETAILS

## CAPE TOWN

**Telephone:** +27 (0) 21 551 7066  
**Fax:** +27 (0) 86 671 2165

**Physical Address:** Unit B16  
Century Square  
Heron Crescent  
Century City  
7441  
Cape Town  
Western Cape  
South Africa

**Website:** [www.analytixbi.com](http://www.analytixbi.com)

**Contact:** **Dr. Sheena Mathew** (MB BCH, WITS)

**Email:** [sheena@analytixbi.com](mailto:sheena@analytixbi.com)

**Mobile:** +27 (0) 82 941-9207

## JOHANNESBURG

**Telephone:** +27 (0) 11 258 8731  
**Fax:** +27 (0) 11 258 8511

**Physical Address:** Country Club Estate  
Building 2  
Woodlands Drive,  
Woodmead  
2052  
Johannesburg  
Gauteng  
South Africa

Dr. Sheena Mathew completed her MB BCH at the University of the Witwatersrand and has gained considerable experience in both the public and private sectors. She has done considerable work as a general practitioner in the private sector, while her time in the public sector focused mainly on paediatrics, HIV in paediatrics and rehabilitation. Her interest in natural healthcare led her to do a diploma in Ayurveda, in India. Her work experience also extends internationally, having worked at the Private Hospitals in the UK.

She is currently studying for a Masters in Public Health at the University of Cape Town and brings a wealth of knowledge to any market research and medical research projects in the healthcare industry.